

CNC  
MACHINES | **EXPO**

**March 27-28, 2019**  
**10:00am to 4:00pm**

**4400 W. Walnut Hill Lane, Building A,  
Suite 120, Irving, TX 75038**

You're invited to the grand opening of our state-of-the-art facility in Dallas, Texas. Come view the latest line of CNC machines AXYZ has to offer.

Workshops include Sign Production, Aluminum Processing, Plastic Fabrication, Aluminum Composite Processing, Phenolic Based Cladding Fabrication and Waterjet Cutting.

Any questions on material processing, machine configuration, software or tooling?

Now is the time to come and meet our CNC technical experts!

Complimentary refreshments and a catered lunch will be provided, as well as door prizes and a number of give-a-ways.



TRIDENT



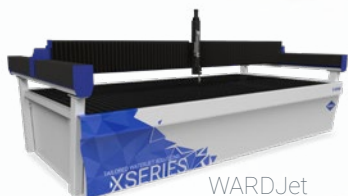
AXYZ Series



PACER



PANELBuilder



WARDJet

# DAY 1:

## 10:30 am - TRIDENT

Today's sign shop's most important tool. Offering a heavy-duty router with a 10 position tool changer, oscillating knife, tangential knife, and camera registration system.

- POP Display fabrication on Encore foam board, Palboard multi-layer PVC, and Falconboard corrugated graphics board.
- Dimensional sign fabrication with push through elements.
- Routing and knife cutting thick foam packaging.

## 11:30 am - CNC Router Machine Maintenance

- How to perform regular inspections.
- What daily tasks to perform to extend service after 6 months.
- Which maintenance service package to choose that works best for your machine.

## 1:00 pm - XYZ Series

A popular, highly configurable choice for processing all types of woods, plastics and non-ferrous metals.

- Woodworking Cabinetry on Melamine and Plywood, featuring KCD software.

# DAY 2:

## 10:00 am - Pacer

A heavy-duty machine that is precision driven for premium quality non-ferrous metals and plastic materials.

- Double-sided machining on Coastal Enterprises Precision Board (HDU)
- Machine pocketing and routing on ¼ - ½" aluminum.
- Evonik Acrylite Acrylic processing to ensure a clean cut edge.

## 11:00 am - PANELBuilder

Specializes in processing large volumes of aluminum and phenolic cladding material quickly and efficiently.

- Alpolc ACM cladding, featuring Carter's Architectural Panels extrusion systems.

## 12:00 pm - CNC Router Machine Maintenance

- How to perform regular inspections.
- What daily tasks to perform to extend service after 6 months.
- Which maintenance service package to choose that works best for your machine.

## 1:00 pm - X1530

A waterjet solution built for speed, accuracy and strength, cutting with abrasive and water only.

- Using waterjet technology to cut ¼ - ½" aluminum, ¾" stone, 2" foam, ¼" mild steel.

## 2:00 pm - Waterjet Maintenance

- How to perform regular inspections of your cutting head.
- How to change the high pressure seals in the intensifier.